



By dressing with such splendor, you tell the world that your tastes are immaculate and miles ahead of your contemporaries. A true monarch of style.

-1001





The sparkling glitter of innocence is best exemplified through these designs.  
Be the queen of virtue you were destined to be.

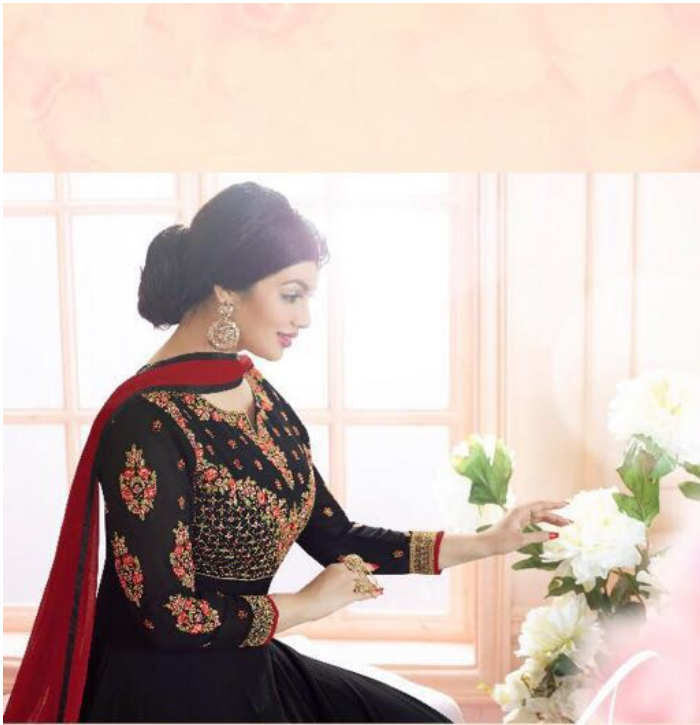
1003



Shree  
FABS



Of all the things in  
heaven and earth that  
man holds close to his  
heart, when you look  
as you do in these  
threads, he holds  
nothing dearer. He  
above the rest.



Styles change. Fads come and go.  
Trends are volatile and unpredictable.  
But true fashion is eternal. Such is  
engraved on the tree of eternity deep  
within the Garden of Magic.

1004





Shree  
FABS

*Beauty*

You are the prize of all  
the lands. Your  
threads represent  
your beauty the same  
beauty prizes of all  
the kingdoms vie for.



1003



When your Dress has been designed with the most intricate precision by the most gifted artists, what do we call you but a masterpiece?



Shree®  
FABR



You stop to wonder what they're celebrating. Which is when you realize that you are the occasion.

1005

You stop to wonder  
what they're  
celebrating. Which is  
when you realize that  
you are the occasion.

1005



1001



1003



1002



1004

**MASAKALI**  
BY AYESHA



1005





# MASAKALI

BY AYESHA